



# The Pleasant Places of Florida

(Suggested in The Five Orange Pips)

A Corresponding Scion Society of The Baker Street Irregulars

+++++

## 12th Night Reflections

...The Fall Gathering was a great success, and we thank Norma & Morris Rannels for being such good hosts... Please excuse the several errors that have appeared in our "Quote Puzzle" - I can always "Count" on a certain Ppoffer to bring me acropper. ... They say imitation is the highest form of flattery. Our column "Philatelic Philandering" appeared in the Mexborough Lodger's fine newsletter. "The Register" [\$3 per annum from Betty Pierce, [redacted]]. Another excellent publication rec'd: "The Call of the Hunt" by John Stephenson [redacted].



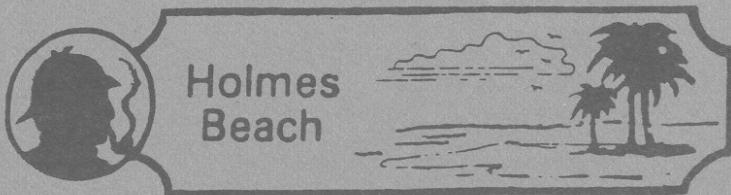
"It's elementary."

... Roy Preece's The Village Bookshelf [redacted] has put out a dandy catalogue of S'ian publications. ... Baker Street Publications [Box 994, Metarie, LA 70004] is putting out two quarterlies: "Slueth Journal" & "Baker Street Gazette" .. ... Chris Redmond's new Welcome to America, Mr. Sherlock Holmes is scheduled for fall release by Simon & Pierre Publ.Ltd. [Box 280, Adelaide St.Stat., Toronto, Ont., M5C 2J4] ... "The Mystery of Edwin Drood", current Broadway hit musical/who dunnit, is directed by Rupert HOLMES, no less. As always, thanks to corresponders since #85: David Greeney, A.VanNostrand, Milt Halpert, George Edwards, Mike Carroll, John Stephenson, Phil Brogdon, John Crane, John Kalajian, Robert Hess, Wanda Dow(nee Butts), Staff Davis, Mike Kraylor, Pattie Brunner, Ely Liebow, Amy Dykes, Amie Metanky, Ralph Spitulski, Mark Alberstat, Jerold Bensky, Arnold Korotkin, Jack Kerr, Dave Galerstein, John Shaw, Stephanie Hanks, Jim Suszynski, Tom Stetak, Peter Blau & Richard Smith. Sorry for any sins of omission.... Speaking of omissions, "Mrs. Hudson's Kitchen" feature will be resumed in the next Communication. .... Pax.



Holmes: I say, That new 1987 P.P. of F. CALENDAR is a real corker - right, Watson?  
WATSON: Right on!, Holmes, old boy. see p. 1

2.



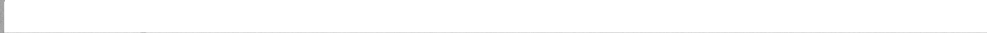
COMMUNICATION #86.

NOVEMBER 13, 1986 \*

Published Irregularly by **The Pleasant Places of Florida**

A Corresponding Scion Society of **THE BAKER STREET IRREGULARS**

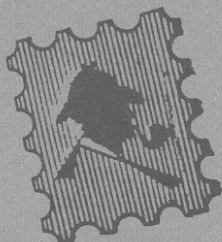
Please direct correspondence to: The Rev'd Dr. Benton Wood, BSI - Recorder



Subscription rates: \$2.21 per annum; \$10 life-time. Current Circulation: 414

+ + + + + + + + + + + + + + +

[On this day, in 1887, The Camberwell Poisoning Case took place.(FIVE)]



# Philatelic Philandering

.... or "Stamping Around"  
with SHERLOCK HOLMES.



At the left is depicted the "221-B"[Baker Street] stamp. For \$1 I'll send you one mounted on a handsome presentation card. At right, is depicted the figurehead of the "GLORIA SCOTT" - very Conanical!



**A nod to Sherlock Holmes**  
Holmes is not only alive,  
but very healthy  
**had the right idea**

**Watson vows to bounce back**

**Dr. Watson:**

2G NORTH & NORTHWEST JOURNAL—Wednesday, September 24, 1986

**Holmes, Watson Follow  
The Trail Of The 'Hound'**

**Confidence  
is essential**

# The Complete New Guide to Sherlock Holmes

Michael Hardwick

Michael Hardwick's complete new guide to Sherlock Holmes is his long-awaited definitive companion to the great detective. Everything admirers of the great detective would wish to know can be found in this book; details of the plots, how the legend of Sherlock Holmes was conceived and flourished, Conan Doyle's original models for Holmes and other major characters in the stories, and detailed information on Holmes's publishing history.

Lavishly illustrated with original drawings from the Strand Magazine, this complete guide is the perfect way to celebrate the first appearance in print of Sherlock Holmes in 1887 in *A Study in Sherlock*.

*Michael Hardwick is the author of many books about Sherlock Holmes and the Victorian period, and his 'Sherlock Holmes: My Life and Crimes' was an international best seller.*

October £10.95 (C) 234 x 156 mm  
288 pp 32 b/w illus 297 78963 5

Published: Weidenfeld + Nicholson



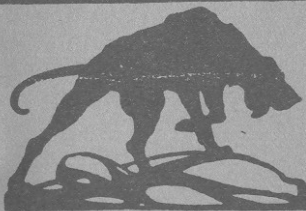
## Pat Fenner

*Independent Action*

**Is there a chapter of the Baker Street Irregulars in America, or perhaps even in Florida? I know there is one in England. Could you give me an address? It is a fan club for Sherlock Holmes.**  
**Sharon Noel**



Membership in the Baker Street Irregulars is limited to 60, one for each of the original stories. Consequently, **Benton Wood** regional groups or "scion societies" have been formed, three of which are in Florida. The central West Coast chapter is the Pleasant Places of Florida from *The Five Orange Pips*. Recorder is Rev. Dr. Benton Wood, [redacted] — are you ready for this? — Holmes Beach 33510.



## THE HOUND OF THE BASKERVILLES

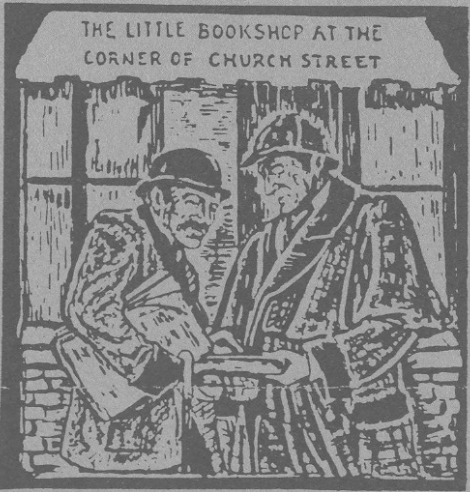
BY A. CONAN DOYLE  
PRICE 6/-

GEORGE NEWNES LTD.

### ELEMENTARY MY DEAR WATSON BY GRAHAM NOWN

It is 100 years since the world's most famous detective, Sherlock Holmes, made his first appearance in *A Study In Scarlet*. This centenary book provides a lively insight into the character and his life. It studies the personality of Sherlock Holmes and his methods in the context of Victorian crime and police methods. It also looks at the life of his creator, Conan Doyle, and the people he encountered who inspired some of the characters in the stories. With maps of Victorian London and original illustrations. £12.95

*From Waterstones Booksellers' 1987 Catalogue, London.*



John Stephenson - 535 W. EASTER PL.  
WITTLETON, COLO 80120

# Holmes & Co. in fine form



4

FAST 'N' FUN

# S'IAN PUZZLES

QUOTATION PUZZLE #8



|   |   |   |   |   |   |   |   |   |   |   |   |   |   |   |   |   |   |   |   |
|---|---|---|---|---|---|---|---|---|---|---|---|---|---|---|---|---|---|---|---|
|   |   |   |   |   |   |   |   |   |   |   |   |   |   |   |   |   |   |   |   |
|   |   |   |   |   |   |   |   |   |   |   |   |   |   |   |   |   |   |   |   |
|   |   |   |   |   |   |   |   |   |   |   |   |   |   |   |   |   |   |   |   |
|   |   |   |   |   |   |   |   |   |   |   |   |   |   |   |   |   |   |   |   |
| I | W | U | T | S | F | I | A | T | I | S | T | V | F | O | R | R | S | H | S |
| L | D | A | C | O | O | E | O | E | N | S | O | N | E | R | A | E | T | D | E |
| E | H | S |   | G | R | N | L | N | S | T | E | I | S |   | W | I | N | H | C |
| T | E | S |   | A | T |   |   |   |   |   |   |   |   |   |   |   | T | E | R |

## Figgerits



### WORD LIST

What do they have in common?

DXASI

AISAXS YFVX

SXZXSXX'M MEQSG

PILUH PILX

MBTLB

IRXSQPIL ZVIJ

YSQMFLXS'M TLQZFSR

AQVVQISU AIVV

GFFGEYIMGX

EQJECIH

1.

DEFINITIONS by Dell Publishing WORDS

|   |    |    |    |    |    |    |       |
|---|----|----|----|----|----|----|-------|
| The Three —, Larry, .....<br>Curly, and Moe         | 23 | 18 | 25 | 2  | 14 | 9  | 6     |
| Thanksgiving or .....<br>Christmas, for example     | 8  | 28 | 34 | 22 | 17 | 20 | 13    |
| Slogan; catch phrase .....                          | 26 | 10 | 21 | 7  | 28 |    |       |
| Bury the —, reconcile .....                         | 8  | 32 | 30 | 24 | 1  | 9  | 18    |
| Detective, Sherlock — .....                         | 19 | 16 | 12 | 27 | 4  | 23 |       |
| Find fault; gripe .....                             | 24 | 15 | 27 | 3  | 33 | 20 | 5 11  |
| Company with exclusive ....<br>control of a service | 26 | 16 | 29 | 25 | 3  | 31 | 33 13 |

SOLUTION:

|    |    |    |    |    |    |    |    |    |    |    |    |    |
|----|----|----|----|----|----|----|----|----|----|----|----|----|
| 1  | 2  | 3  | 4  | 5  | 6  | 7  | 8  | 9  | 10 | 11 | 12 | 13 |
| 14 | 15 | 16 | 17 | 18 | 19 | 20 | 21 | 22 | 23 |    |    |    |
| 24 | 25 | 26 | 27 | 28 | 29 | 30 | 31 | 32 | 33 | 34 |    |    |





# Agony Column

(Readers are asked to submit items for this Column. Thank you.)

**Moriarty  
Funeral Home, Inc.**  
*Serving Montclair  
Since 1947*

## CRIME FIGHTER, AGE SIX.



### SHERLOCK HOLMES A CENTENARY CELEBRATION ALLAN FYLES

Although Conan Doyle died in 1930, Sherlock Holmes lives on – for how can someone whose obituary has not yet appeared in *The Times* be dead? This is a study of the entire Sherlock Holmes phenomenon – the stories, the stage and screen versions that they have inspired, the actors, the illustrations and, of course, the creator of the greatest detective of all time. With colour illustrations. £10.95

↑ FROM WATERSTONE'S BOOK-SELLER'S 1987 CATALOGUE, LONDON.

**J. & B. CLEANING SVCE.**

**"WE FIGHT GRIME"**

## HOUSE DETECTIVE

Toledo's Largest Private

### HOME INSPECTORS

providing

A Professional Service  
for today's wise  
Home Buyer and Realtor



### BOOKS

**LETTERS TO SHERLOCK HOLMES.** Edited by Richard Lancelyn Green. Penguin, 235 pp., \$6.95.

**THE FURTHER ADVENTURES OF SHERLOCK HOLMES.** Edited by Richard Lancelyn Green. Penguin, 272 pp., \$4.95 paper.

**SHERLOCK HOLMES THROUGH TIME AND SPACE.** Edited by Isaac Asimov, Martin Harry Greenberg & Charles G. Waugh. Bluejay Books, 355 pp., \$8.95 paper.

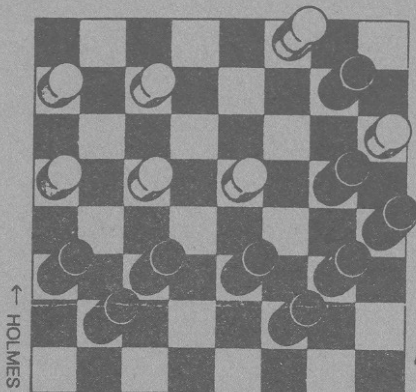
**SON OF HOLMES.** By John T. Lescoart. Donald I. Fine, 223 pp., \$15.95.

# BRAIN BOGGLERS

BY MICHAEL STUEBEN

Puzzles can be found everywhere. Here are some tricky questions involving such everyday games as checkers, bowling, and Monopoly. Although the questions seem simple, watch out: several traps have been set. The answers

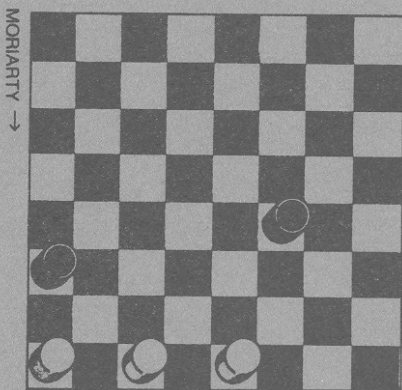
*ON REQUEST*



**1** Octogenarians Sherlock Holmes and Professor Moriarty have been reduced to daily skirmishes over the checkerboard in the Baker Street Nursing Home. The bizarre position at the left was arrived at while both contestants were under heavy medication; all their previous moves were legal but of doubtful strategy. At this point, both Holmes and Moriarty recover their wits.

"Well, Holmes, you subaverage dunderhead, you're dead lost this time," says Moriarty. "I've nine kings to your one king and six men."

"My dear professor, you're evidently suffering from the delusions of advanced senility; my position is invincible," says Holmes, who's playing white and has the next turn. Assuming perfect play by both players for the rest of the game, who's right?



**2** In their next game, Holmes (white) and Moriarty reach the following position, with the professor to move. "I concede, Holmes," says Moriarty. "In this position I can king first, but ultimately, my two pieces won't prevail against your three."

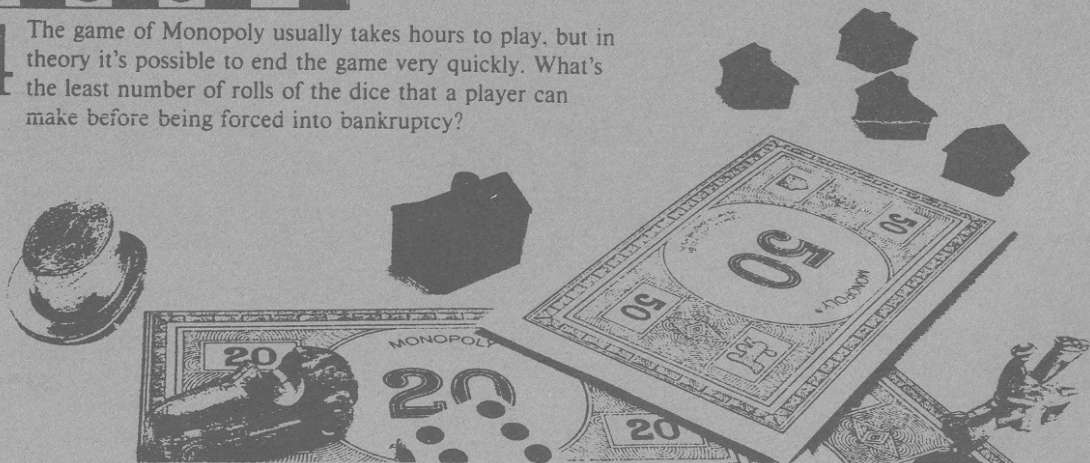
"Agreed," says Holmes. "But I'll offer you a side bet. I wager that you'll never king the first piece you move."

"That's insane, Holmes. If you play the game out fairly and quickly, you can't stop me from kinging that first piece. I accept your stupid bet."

As usual, Moriarty lost. Can you determine how Holmes won the bet? (Assume American tournament rules, in which one must capture an opponent's piece whenever possible.)

**3** Here's a good bet to try at the local bowling alley. What's the lowest possible score when five strikes and five spares are rolled in any order? (Assume that any bonus balls thrown at an eleventh or twelfth set of pins aren't counted as spares or strikes.)

**4** The game of Monopoly usually takes hours to play, but in theory it's possible to end the game very quickly. What's the least number of rolls of the dice that a player can make before being forced into bankruptcy?



## SHERLOCK HOLMES

10 Northumberland St., WC2

phone 930-2644

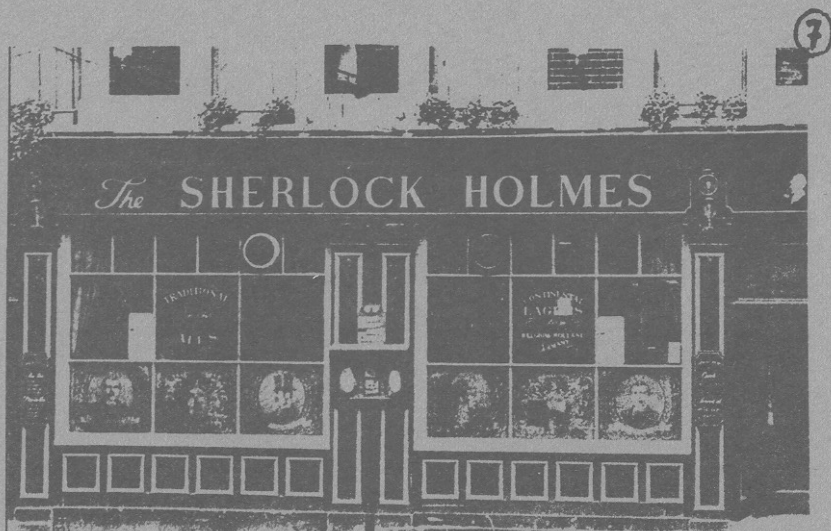
Forget about echoes of 221B Baker St.; this cozy pub sits in a narrow alley just off Northumberland Avenue, less than a block from the Thames and only a short walk south of Trafalgar Square. Still, the ties to Holmesian memorabilia are strong; there's a Baker Street museum and restaurant ("Mrs. Hudson's Pantry") upstairs.

The green front with gold trim includes glass etchings of Holmes himself, Dr. Watson, and two renderings of Arthur Conan Doyle on the facade. Inside, the theme remains strong, though purists may be put off by the commercial clutch of Holmesy knickknacks—T-shirts, deerstalker hats, tote bags and even ashtrays—that are for sale at inflated tourist prices. Still, the oval bar is well tended and the pub itself very friendly and well run.

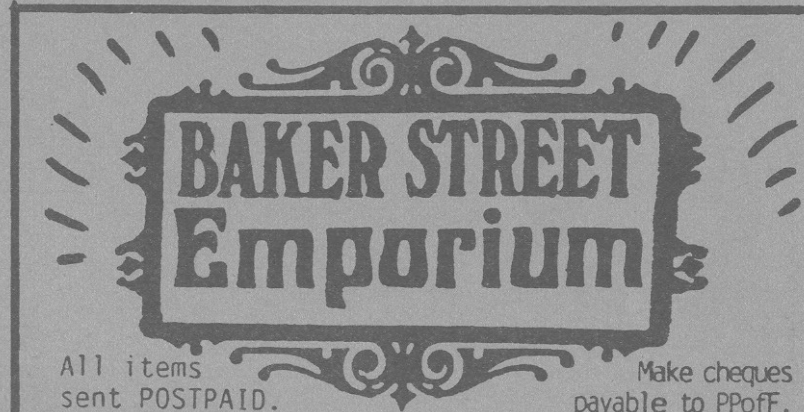
The lunchtime food counter offers typical basic fare, and what's most surprising is the preponderance of local citizens who frequent the premises. This is a fine place to meet workers from nearby Whitehall, and there is, of course, the great attraction—that Conan Doyle himself used to frequent this pub in the days when it was called the "Northumberland Arms" (he mentions it in "The Hound of the Baskervilles").

The upstairs restaurant is not terribly distinguished; the smart and congenial main-floor pub is the real attraction. Remember, though, not too much talk of crimes planned or perpetrated. The clientele also includes quite a few policemen from nearby Scotland Yard.

by Stephen Birnbaum



*The Sherlock Holmes is not far from Scotland Yard.*



All items sent POSTPAID.

Make cheques payable to PPoff.

Order from: **Pleasant Places of Florida**

POST PAID  
\$2.50  
LUSH



Limited Printing  
Copy No. \_\_\_\_\_  
(of 100)



