



The Pleasant Places of Florida

(Suggested in The Five Orange Pips)

A Corresponding Scion Society of The Baker Street Irregulars

+++++

12th Night Reflections

.... The annual conclave of the Baker Street Irregulars in NYC was its usual great success. The temperatures were a bit nippy for this PPofFer, but all in all a jolly good show. Our venerable Commissionaire, Dr. Julian Wolff, passed on the baton to Tom Stix, Jr.. The PPofF was well represented with five stalwarts on hand.... Our sad news was to learn that PPofFer, Marsha Pollak, will be moving to Texas. We'll miss you, Marsha. Bob Gellerstedt

sent on issue No.1 of "The Irregular News" - and it's very nicely done, thank you.Bruce HOLMES, of Dollard des Ormeaux, Quebec, sent a xerox copy of "Sherlockiana on Stamps" which he exhibited at his local stamp club - & won a prize, no less! Bruce is trying to recreate the wrapper from CARD, & needs help. I'll send you his list of queries if you write me & request them. John Stephenson

has formed a new Scion "Poor Bibliophiles International". Write him, if interested. ... John Bennett Shaw tells me he will take a hiatus from conducting Workshops in '86, but there will be "A Weekend in Toronto" June 19-22. The faculty is 4-Star. Make inquiries to The Bootmakers of Toronto,

.... As always, my thanks to all who corresponded with this Recorder since #79 - Peter Blau, Duane Damon, Dave McCallister, Wanda Butts, Kiyoshi Tanaka, John Wood, Caroline Everett, Jon Lellenberg, Edward Haines, Elliott Black, Harold Niver, Ted Schulz, Mark Alberstat, Mike Carroll, David Greeney[of New Zealand], Alan Olding [of Australia] and the incomparable Michael Harrison, of Hove. My thanks to one and all.

The B.S.I. Chaplain's Sermonette

It seems there was a chess competition held at the Regency, site of the BSI Dinner. The lobby was filled with chess players bragging loudly about their achievements & victories. Fed up, the Manager tossed the lot of them out on the street, saying: "I've had it with all you chess nuts boasting in my foyer!"





COMMUNICATION #80

JANUARY 23, 1986 *

Published Irregularly by **The Pleasant Places of Florida**

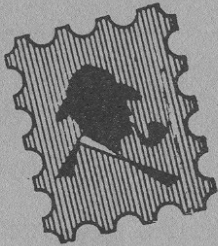
A Corresponding Scion Society of **THE BAKER STREET IRREGULARS**

Please direct correspondence to: The Rev'd Dr. Benton Wood, BSI - Recorder
[Redacted]

Subscription rates: \$2.21 per annum; \$10 life-time. Current Circulation: _____

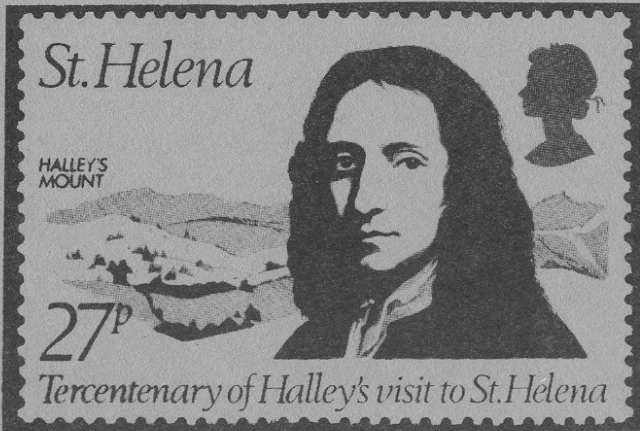
+ + + + + + + + + + + + + + + +

[* - "On January 23rd, you incommoded me ..." noted Professor Moriarty as Sherlock Holmes tightens the noose. FINA]



Philatelic Philandering

.... or "Stamping Around" with SHERLOCK HOLMES.



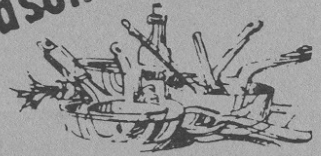
Birdy Edwards, a.k.a. Jack McMurdo and John Douglas [VALL], was lost overboard near St. Helena, the famous island of Napoleon's exile, and where Halley's Mount is located.

Holmes says he'd rather be in Tampa

Slumping Watson feels right at home in faraway Britain



From Mrs. Hudson's Kitchen ③



INSPECTOR LESTRADE'S FAVOURITE

[6 sandwiches]

If Sherlock Holmes had a mystery to solve, would he call on Inspector Lestrade for assistance? Perhaps not, but Holmes did go to the Yard to ask Lestrade, "How did you make that bodaciously delicious sandwich?"

6 loaves pita bread (also known as Ballady Bread) 1 cup plain yogurt
1½ pounds thinly sliced rare roast beef 1½ cups shredded lettuce
1 cup very thinly sliced Bermuda onion 12 slices tomato, cut ¼" thick
1 medium cucumber, pared, seeds removed and chopped fine
1 tblsp grated onion ¾ teaspoon salt 1/8 teaspoon pepper



Slit pita breads in half & open to form pouch. Season roast beef with salt and place 4 oz. of beef inside each pita bread. Heat for 1½ minutes on "high" in microwave or 8-10 min. in 400° oven. Mix shredded lettuce and thinly sliced onion in a bowl. Top beef inside each pocket with lettuce & onion mix. Place 2 slices of tomato on top of lettuce & onion. Combine yogurt, cucumber, onion, salt & pepper. Serve each sandwich with ¼ cup of yogurt dressing. Add more as desired. Garnish with garlic baby dill pickle, cole slaw, ripe olive and sweet cherry pepper.

Holmes was overheard to say, "Without a doubt, Watson, you can not find a finer mid-day repast in all of London!"

[Thanks to "Sherlock's Pub", Chicago]

4

FAST 'N' FUN

S'IAN PUZZLES



QUOTATION PUZZLE #2

Unscramble & fill in this Canonical Quotation using the letters below. The letters are, however, in their proper column. The four boxes in the lower-right designate the source of the quote. Go get 'em!

| | | | | | | | | | | | | | | | | | | | |
|---|---|---|---|---|---|---|---|---|---|---|---|---|---|---|---|---|---|---|---|
| | | | | | | | | | | | | | | | | | | | |
| | | | | | | | | | | | | | | | | | | | |
| | | | | | | | | | | | | | | | | | | | |
| | | | | | | | | | | | | | | | | | | | |
| | | | | | | | | | | | | | | | | | | | |
| | | | | | | | | | | | | | | | | | | | |
| | | | | | | | | | | | | | | | | | | | |
| | | | | | | | | | | | | | | | | | | | |
| | | | | | | | | | | | | | | | | | | | |
| | | | | | | | | | | | | | | | | | | | |
| | | | | | | | | | | | | | | | | | | | |
| | | | | | | | | | | | | | | | | | | | |
| | | | | | | | | | | | | | | | | | | | |
| | | | | | | | | | | | | | | | | | | | |
| N | E | H | Y | D | R | M | V | A | A | O | I | A | A | T | T | E | W | A | O |
| L | E | T | L | O | R | I | F | W | T | L | C | L | S | G | G | E | I | T | L |
| M | S | C | H | R | R | I | N | E | I | C | C | T | N | N | E | E | N | V | O |
| F | C | N | H | N | L | E | I | H | I | C | F | H | A | N | F | F | E | N | L |
| X | | F | A | A | O | O | D | O | N | F | I | I | I | M | Y | Y | D | G | H |
| E | | H | | | I | R | | N | I | | O | R | L | | O | O | | L | E |
| I | | L | | | G | | | I | | | L | | | | N | N | | L | E |
| | | | | | | | | | | | | | | | | | | | |
| | | | | | | | | | | | | | | | | | | | |
| | | | | | | | | | | | | | | | | | | | |
| | | | | | | | | | | | | | | | | | | | |
| | | | | | | | | | | | | | | | | | | | |
| | | | | | | | | | | | | | | | | | | | |

LOGIC PROBLEM

Mycroft and the Purloined Bumpershoot

The Diogenes Club was all astir. Someone had made off with Commander Young's umbrella. "No need ringing up the Yard," said Mycroft Holmes, "just relate to me the salient facts." It seems that three persons - Daniel Davidson, Walter Whiteside, and Quentin Queensbury - were only club members near or in the cloakroom. One had to be the purloiner, one had to have witnessed the theft, while the third was not involved at all. Quentin had to be either the thief or the witness. If he were the thief, then Walter had to be the witness. If Quentin was the witness, then Daniel couldn't be the thief. In any case, Walter had to be the thief or uninvolved. "I know who dunnit," Mycroft exclaimed. Do you?

Agony Column

(Readers are asked to submit items for this Column. Thank you.)

Danbee Industrial Investigations®

One Godwin Avenue
P.O. Box 159
Midland Park, New Jersey 07432

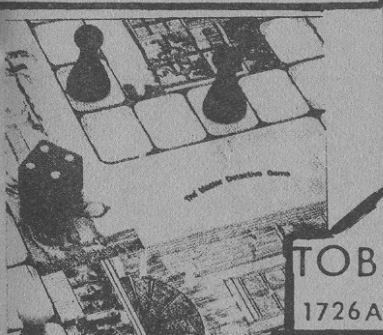
5

JOHN WATSON
BUY A CAR THAT LASTS LONGER THAN THE PAYMENTS!

Volkswagen Audi Porsche Audi

Ogden, UTAH 3333 WALL AVENUE • 399-5811

The ARMCHAIR DETECTIVE
129 WEST 56TH STREET
NEW YORK, N.Y. 10019



“a brilliant deduction” and more
Don't write off your IRA as just a tax deduction.
Switch to a Scudder IRA. It's quite . . . elementary.

When you open your account fill out our simple IRA transfer form and we'll do all the rest. You can transfer any time you like — even after April 15, and you pay no taxes.

800-453-3305
or write:
175 Federal St., Dept. 12, Boston, MA 02110

TOBACCO SHOP AND MYSTERY COLLECTIBLES
1726A SYCAMORE SQ. MALL · MEMPHIS, TN 38134 · PHONE: (901) 388-6653

221B BAKER STREET
(John Hansen, \$14.95) P 2-6/C 3/45m

Logic, intuition, and puzzle-solving ability are needed as players race through Sherlock Holmes's London to find clues to a mystery. At each of 14 locations, a player will find either general information about the mystery, specific charade-style clues to the solution, or occasionally nothing at all. If you think someone else is about to win, you should gamble by guessing the solution first. Twenty cases come with the game, and additional case sets are available.

Gregson Reports Robbery

Sherlock's Home

The Bookstore Of Mystery & Suspense

5614 E. Second St., Long Beach, CA 90803
(213) 433-6130

Aardvarks Booksellers
P.O. Box 15070
Orlando, Florida
32858-5070

Designed by Jeff Huddleston





CONSUMERS DIGEST
DEC. 1985

Who Dunit, Sherlock?

Sherlock Holmes could have sunk his teeth into this one.

If you love the lulling comfort of rail travel and you're an Agatha Christie or Sir Arthur Conan Doyle fan, The 20th Century Railroad Club will allow the sleuth in you to run wild on several of its domestic and overseas rail trips.

The trips involve train passengers in on-board "who dunit" mysteries staged by professional actors from Chicago's Commons Theatre. Instead of viewing a mere stage performance, passengers are confronted in dining cars and in their seats by disguised actors who encourage them to unravel clues leading to the mysteries' solutions.

Domestic mystery rail trips include "Elementary, My Dear Watson" and "Murder on the 20th Century." The first-named is a three and one-half hour \$50 Saturday evening tour that takes place on a chartered Chicago elevated train. As the two-car electric train travels about the city 30 feet above street level, passengers are treated to a mystery, champagne, wine, soft drinks, and hors d'oeuvres. Passengers board and are returned to the Randolph and Wells station in Chicago's loop.

"Murder on the 20th Century" departs Chicago's Union Station Saturdays at 5:25 p.m. for Indianapolis, Indiana or Dearborn, Michigan, and returns on Sunday at 11:30 a.m. Guests stay

(continued from page 8.)

venture of *Sherlock Holmes' Smarter Brother* in 1976). But none, till now, could match the elegant contours and stylish snap of the Rathbone originals. Screenwriter Chris (Gremlins) Columbus' notion of Holmes as a schoolboy is inspired. And the folks at Amblin Entertainment (the Steven Spielberg film factory) have wisely let special effects complement rather than crush characterization this time. *Young Sherlock Holmes* is the thinking teen's *Goonies*. We meet Holmes, still a bit gangly, in school, along with his chubby new roommate, John Watson. Two newcomers, Nicholas Rowe, 19, as Holmes, and Alan Cox, 15, as Watson, deliver wonderfully engaging performances. And director Barry Levinson, after the ham-handed symbolism of *The Natural*, shows here (as he did in 1982's *Diner*) the wonders he still can work with young actors. It's fun, and often moving, watching Holmes trying not to let his yearnings for a young woman (the ravishing Sophie Ward) interfere with his thinking. The mystery, about a cult that kills its victims with

overnight in a hotel. The trip, via first-class vintage rail cars, features a three-act mystery play, gourmet dinner, and breakfast, and includes an open bar serving complimentary cocktails and soft drinks. Cost per person based on single occupancy is \$245, or \$225 based on double occupancy. Plans call for one of these tours every six weeks in 1986.

Included in the 20th Century's 1986 overseas rail trips is "Murder on the Orient Express," a 10-day mystery rail trip departing from Paris and traveling to Budapest, Hungary. Passengers become involved in an on-board mystery and search for clues at tourist locations in European cities. Scheduled for summer departure, the rail trip will cost about \$2,500 per person, which includes round-trip airfare, rail carriage, hotel fees, and some meals.

Twentieth Century, which also offers domestic non-mystery rail trips, is planning several 1986 mystery rail trips in Asia, South America, and Europe. For more information, contact The 20th Century Railroad Club, 509 W. Roosevelt Road, Chicago, IL 60607; (1-312) 829-4500.

poison darts, might be a shade too elementary were it not for the visual wizardry. The hallucinations in which everything from a brass coat hanger to a roast goose takes on monstrous life are irresistibly scary. An attack by a trayful of French pastries merits a special-effects Oscar. Affectionately conceived and expertly executed, *Young Sherlock Holmes* deserves to be the surprise hit of the holiday season. (PG-13) —Peter Travers

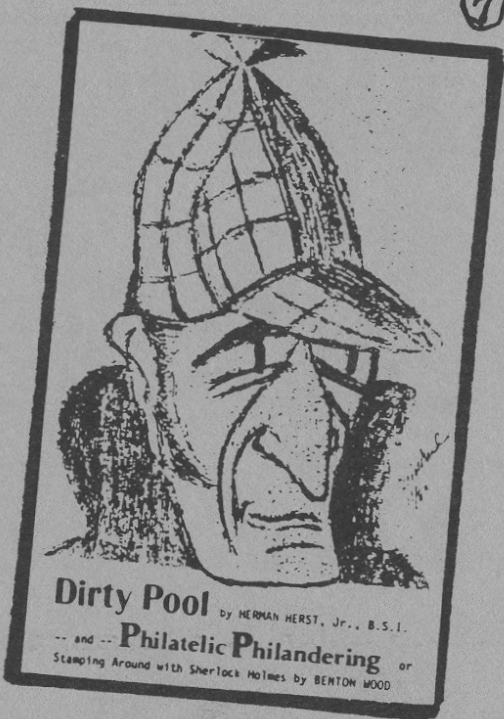
The Hound
Is Back
Lestrade finds
clues in the pocket
Holmes Arrested
Charges
On Cocaine

BAKER STREET Emporium

All items sent POSTPAID.

Make cheques payable to PPoFF.

Order from: **Pleasant Places of Florida**



ITEM #1.- PPoFF's latest chapbook! "DIRTY POOL" a scintillating S'ian philatelic and numismatic pastiche PLUS Dr.Ben Wood's "PHILATELIC PHILANDERING or Stamping Around with S.H."
A double-barrel bargain for only \$3.50

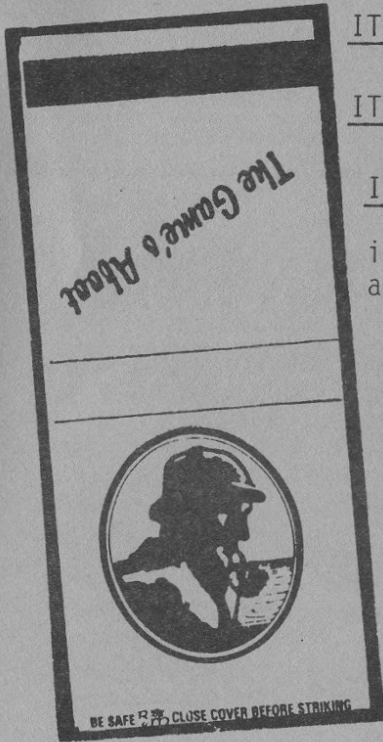
ITEM #2 - Set of 4 PPoFF Hi-Ball GLASSES[11oz]
Just the thing for toasting the Queen. Shipped with TLC. .. \$15.00

ITEM #2a - By popular demand. Just 2 of the above for only..... \$8.00

ITEM #3 - Cathay Books edition of The Adv.of SH - 12 in all. Hardbound.Pristine. \$4.00

ITEM #4 - 4 Penquin paperbacks of Fr.Brown, the super Priest-sleuth. \$3.00 for the batch.....

ITEM #5 - PPoFF MATCH-CLIPS (Peter Blau calls them a "book of matches",but most minds are addled in D.C.) A Super-Souvenir or hand-out.A batch of 8 - all different colours.\$3.00



Images of Sherlock Holmes ornament London's Baker Street Station.

SHOW

• USA TODAY

Spielberg spoils Holmes' mystery



At its best, *Young Sherlock Holmes* is a lavish, ably cast version of how one London schoolboy found his calling. At its worst — in other words, most of the second half — it's a litmus test to determine whether you have or have not yet HAD IT with Steven Spielberg.

But wait — isn't Barry Levinson (*Diner*, *The Natural*) the nominal director? Isn't Spielberg only one of three executive producers? Well, *someone* tacked on a Temple of Doom finale, and a bit where pastries evolve into Gremlin-type creatures. Who could it have been, Martin Scorsese?

Screenwriter Chris Columbus, who did the oppressively juvenile scripts for *Gremlins* and *Goonies*, is also to blame, even if he does deliver some amusing dialogue early on. Certainly Holmes' introduction to Watson — with the amateur detective taking about 30 seconds to deduce the life history of his schoolmate — is worthy of Basil Rathbone, if not Sir Arthur Conan Doyle himself.

But the mystery — '40s B-movie piffle about a religious cult — belongs to a different genre entirely. And without giving too much away, let's just say that certain shots in the fi-

nale recall *House of Wax*, *Samson and Delilah*, the Claude Rains *Phantom of the Opera* and other movies that have about as much to do with Larry Holmes as Sherlock.

Otherwise, *Holmes* is less offensive by itself than the Hollywood mentality it represents. The performances — Nicholas Rowe as Holmes, Alan Cox as Watson, Sophie Ward as their lovely partner in sleuthing — are everything you could hope for, and the budget (unlike, say, *Santa Claus — The Movie's*) shows up on the screen.

But couldn't Spielberg, fat with the security of his past successes, have trusted material that has served the movies honorably for decade? Pleasing an audience is not synonymous with pandering to it, and the truly great film makers know it. So cut the kid stuff, Steve — it's time to be a man.

Young Sherlock Holmes

★★½ (out of four)

Nicholas Rowe . . . Sherlock Holmes
Alan Cox . . . John Watson
Sophie Ward . . . Elizabeth
Anthony Higgins . . . Rathe

A Paramount release. Produced by Mark Johnson. Directed by Barry Levinson. Written by Chris Columbus. In theaters nationally. Rated PG-13 (shootings, explosions).

People and PICKS & PANS

DECEMBER 16, 1985

Screen

▲ YOUNG SHERLOCK HOLMES

Splendid is the word for this captivating entertainment. Who'd have guessed there was any life left in Conan Doyle's master sleuth? There was the traditional Holmes: 14 films with Basil Rathbone starting with 1939's *The Hound of the Baskervilles*. Since then the old boy has been served up as a 1954 TV series, a 1965 Broadway musical (*Baker Street*) and even as pure camp (Gene Wilder's *The Ad-*

(Continued on p. 6.)