



The Pleasant Places of Florida

Communication
#61.

(Suggested in The Five Orange Pips)

A Corresponding Scion of THE BAKER STREET IRREGULARS



12th Night Reflections

... A great event recently took place at

HQ - HOLMES Beach, when Detective Chief Inspector Kenneth McNamara, of Scotland Yard paid us a visit! The Inspector, and his charming wife, Clyne, enjoyed their visit to the PPOFF, including dinner at our fabulous S'ian eatery, "Sherlock's". He promised to give this Recorder a full tour of the Yard next June..... We also enjoyed visits to HQ by Alfred Curtis, of Arizona, and Courtney Anderson, of nearby Orlando...The May 21 issue of Publishers Weekly reports that Lorindy Pictures have been given the right to film a Sherlock Holmes TV series. It's a 1-year contract with options for 3 more. The first year's set (13) will be filmed in England....."Doc" Watson recently appeared on "Nashville Live", while John Watson won the Belgian Gran Prix. Tom WATSON won the British Open, and the World's Heavyweight Champ is still HOLMES. John HOLMES has the largest in porno movies - so I'm told!..... Rec'd "Post-Prandial Pennings", a most ambitious publication of the Pin-Point Pupils from Wm.C. Thomas

)...Stephanie Rapp reports that Winnetka (Ill) Community Theatre presented "The Hound..." June 18-26.....Bob Hahn's "Devon Chronicle" review of "Save Sherlock Holmes" episode on ABC's "Fantasy Island" (2/6/82) as "...a prime contender for the worst pastiche to date" hit the brad on the head..From this Recorder are available: Xerox of "The Case of the Split Reverend" (Stamp World, Aug., '82) for \$1 to cover printing & pstg.; reprint of "The Case of the Missing Paycheck" (Editors Workshop, Vol.3, No.2) for 75¢; or a copy of "The Case of the Suggestible Psychologist" (Psychology Today, Aug. '82) for 50¢.. ... Also available: "Sherlock Holmes & the Brown Mountain Lights" which appeared in a 3-part serial in Mountain Living (May, June & July, '82) for \$2.50 - it's a biggie w/illustrations.... The answer to the Shirley Holmes mystery in this Communication will be sent on request - no charge....Thanks to all who sent in items and communications especially Harry Seigrist, Pattie Brunner, Peter Blau, Mike Carroll, Harold Niver, Fred Zenser, Ron Boffenmyer, J.Thornton, Ron de-Waal, and Wanda Butts. Alan Olding sent a card from Tonga! Many thanks to all.

New from the Popular Press

Dr. Joe Bell: Model for Sherlock Holmes

Ely Liebow

In 1892 Arthur Conan Doyle, famous almost overnight as the creator of Sherlock Holmes, wrote to his former medical school mentor Dr. Joseph Bell: "It is to you that I owe Sherlock Holmes."

Now the first full-length biography of Joe Bell, as he was affectionately known to all of Edinburgh, has been written. It is a biography for which the world is ready.

It turns out that he not only had much in common with the Great Detective, but also with Conan Doyle. Ely Liebow, Professor of English at Northeastern Illinois University and former Sir Hugo (Pres.) of Hugo's Companions in Chicago, had access to the good doctor's private Journal; interviewed his great-grandson; tracked down the son of Joe Bell's daughter's gardener; and spoke with a Kentish lady (appointed a shepherdess on the Downs by the Crown in WWII) who knew Joe Bell and his family.

This volume is required reading for all people interested in Victorian medicine, in Sherlock Holmes and Dr. Watson, and in the history of detective fiction.

1982. 256 pp. 21 photos, index. \$10.95 paper; \$15.95 clothbound.

Popular Press
Bowling Green University
Bowling Green, OH 43403





Holmes
Beach



COMMUNICATION No.61 AUGUST 13, 1982*

Published irregularly by the
Pleasant Places of Florida

A Corresponding Scion Society of

THE BAKER STREET IRREGULARS

Please direct correspondence to:

The Rev. Benton Wood, BSI - Recorder

Subscription & "Lubricant for the Wheels"
\$2.21b per annum

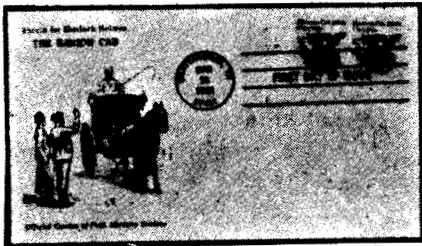
+ + + + +

(* - On the 13th of August, in 1887, the Master saved Col. Prendergast in the Tankerville Card Club Scandal. (FIVE))

**Philatelic
Philandering**

..or "Stamping around
with Sherlock Holmes."

An unusual FDC for the 10.9c coil in the transportation series features a cachet with an illustration by Sidney Paget that accompanied an original publication of a Sherlock Holmes story in **Strand Magazine**. Paget did most of the illustrations for the Holmes stories.



This particular illustration shows Holmes and Watson hailing a hansom cab. Cover cancelled first day and bearing a pair of the Hansom Cab coil stamps, \$1 and a #10 SASE from G. Shannon, P.O. Box 14474, West Allis, Wisconsin 53214.



... For our philatelic phriends the PPofF is offering a set of three(3) 1st Day Covers - all different and all Sherlockian, including the one pictured at left for a mere \$5. The supply is limited on this unique offering of the Hansom Cab issue. Direct your order to the Recorder....Peter Blau sent us a copy of the Comoro (Sc#236) Holmes stamp that has been re-valued at 15Fr. Sorry, we don't have any to spare.... If you haven't been able to secure copies of the 5.9¢ "Solitary Cyclist" stamp or the 10.9¢ Hansom Cab issue, just send the Recorder a Shilling (or 25¢) along with a SASE (Self-Addressed Stamped Envelope) for a set.....

There were 16 correct solutions sent in for the Shirley Holmes Mystery Contest which ran in Communication #59.

Coming Soon... A new P.P. of F. Round-Robin Pastiche

From Mrs. Hudson's Kitchen

(Readers are requested to submit their Sherlockian recipes for this column.)



CURATE'S CHEEK

(An amiable, but simple-minded clergyman said this is simple to prepare and is fit for a Bishop.)

- 1 cup dark brown sugar
- 3½ tblspns English mustard powder
- 1 lb. cooked ham, thickly sliced
- 1 cup heavy cream 1 bunch watercress

Preheat the oven to 300°F (142°C)

Mix the sugar and mustard in a small bowl. Place the ham in a small oven-proof dish and sprinkle about a tablespoon of the mustard and sugar mixture over each slice. Put any remaining mustard & sugar over the top slice and add the cream.

Bake covered for 20 minutes, and then uncovered for another 10.

Put a little watercress on each plate before serving. (Serves 4)

Agony Column

(Readers are asked to submit items for this Column. Thank you.)

FROM:
METACOM, INC.
1-800-328-4818

Cassettes.
\$998 @
2 FOR \$1598
3 FOR \$2298

Shipping & Ins. extra.
write: DEPT. K
1401-B W. RIVER RD. N
MINNEAPOLIS, MN 55411

GOLF MAGAZINE 6/82

Now...For The First Time...
**2 CLASSIC FILMS
ON ONE CASSETTE
FOR ONLY \$49.95!**

Original full length features!
Two for the Price of one!
30 all-time favorites available as
DOUBLE FEATURE cassettes, with up
to 4 hrs playing time.

SHERLOCK HOLMES: "Study in Scarlet"
& "Sherlock Holmes and The Secret Weapon"
Available in VHS or Beta. To play this extra long-
playing video cassette, you must use the
6 hour mode such as SLP, ELP or Beta 3.
To order, mail check, money order or charge
to your AmEx, VISA or MasterCard by
enclosing card number, expiration date and
signature. MAIL TO:



150 Fifth Avenue, N.Y., N.Y. 10011
(212) 243-7726

New York state residents add proper sales tax.
Include \$2.50 postage and handling for each order.

CHARACTER FIGURES by Royal Doulton

6

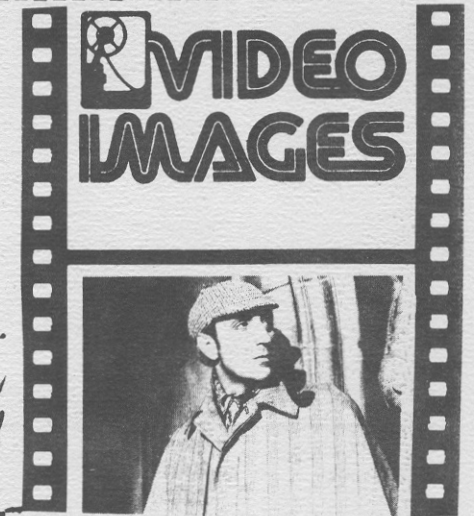


6. The Detective

9 1/2 ins. AH38172 \$110.00

Shannon Mail Order,
Shannon Free Airport,
Ireland.

- 51 **SHERLOCK HOLMES**
"The Final Problem." With
John Gielgud.
- 231 **SHERLOCK HOLMES**
"The Traitor." Award show.
1955
- 232 **SHERLOCK HOLMES**
"Rare Disease." 2/16/55
- 233 **SHERLOCK HOLMES**
"Six Napoleons." 4/12/55
- 234 **SHERLOCK HOLMES** "A
Case of Identity." Last show.
1955
- 305 **SHERLOCK HOLMES**
"The Blackmailer." An
ingenious scheme fails. 2/6/38
- 306 **SHERLOCK HOLMES** "A
Scandal in Bohemia." Holmes
at his best. 8/14/43
- 307 **SHERLOCK HOLMES**
"The Speckled Band." Test
your own deduction. 5/21/46
- 308 **SHERLOCK HOLMES**
"The Empty House." Or is it
really? 7/18/52
- 160 **MERCURY THEATER**
"Sherlock Holmes." With
Orson Welles—Part I. 9/25/38
- 161 **MERCURY THEATER**
"Sherlock Holmes." With
Orson Welles—Part II. 9/25/38



TERROR BY NIGHT (1946-USA). With **BASIL RATHBONE, NIGEL BRUCE, ALAN MOWBRAY**. Sherlock Holmes and Dr. Watson are engaged to protect the "Star of Rhodesia" on a train trip to Scotland. 60 minutes. 863936. BETA \$41.95 863944. VHS \$44.95

DRESSED TO KILL (1946-USA). A Sherlock Holmes mystery with **BASIL RATHBONE, NIGEL BRUCE, PATRICIA MORRISON**. Three music boxes, sold at auction, hold the secret of the location of banknote plates stolen from the Bank of England! 72 minutes. 863677. BETA \$51.95 863685. VHS \$54.95

SHERLOCK HOLMES (1954-England). Two complete TV programs. With **RONALD HOWARD, H. MARION CRAWFORD**. "The Case of the Impromptu Performance". A prisoner condemned to be hung at dawn gives Sherlock and Dr. Watson few clues to use in proving his innocence. "The Case of the Exhumed Client". Sir George has been murdered and Holmes puts his own life in peril. 54 minutes total. 86391X. BETA \$41.95 863928. VHS \$44.95

FROM:  **PUBLISHERS
CENTRAL BUREAU**
DEPARTMENT 145
1 CHAMPION AVENUE
AVENEL, NEW JERSEY 07131
(Shipping 2.25)

R909 THE ADVENTURES OF SHERLOCK HOLMES—by Sir Arthur Conan Doyle.
Narrator: **Basil Rathbone**. Three classic Holmes adventures are masterfully read by the incomparable Basil Rathbone. The stories are: "A Scandal in Bohemia", "The Red-Headed League" and "The Adventure of the Speckled Band."



Dear Microbibliophile/Sherlockian:

I take great pride in announcing my latest bibliographic booklet...

DISCOVERING SHERLOCKIAN MINIATURE BOOKS

This sixteen page booklet, whose dimensions are 8 1/4" x 5 1/4", is bound in a sturdy, white cover stock. On the front cover is a tipped-in color photograph of miniature books atop Ron De Waal's second Holmes bibliography.

Robert F. Hanson, 1627 Bob O'Link Drive, Venice, FL 33595 USA

Please send () copy (s) of DISCOVERING SHERLOCKIAN MINIATURE BOOKS. Attached is my remittance, made payable to: ROBERT F. HANSON, in the amount of \$5.00 per copy. An additional \$1.25 is included for delivery outside of the USA.

Name.....Street.....
City.....State.....Zip.....



CAN YOU SOLVE THIS MYSTERY?

SHIRLEY HOLMES

DETECTIVE



When Shirley heard that her friend, folk singer Rod Bleeker, had been robbed, she rushed right over to his office. Rod was explaining the situation to Police Capt. Americus as she walked in.

"The robber had to be either my manager or my partner," said Rod. "Nobody else knew that I had a collection of valuable folk art here — much less where I kept it!"

"Can you give me a description of the robber?" asked Capt. Americus.

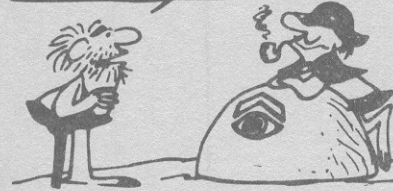
"Sure, but it won't help. The robber wore a mask, and gloves to keep his fingerprints from showing. He wore a gray suit and had a hat pulled down over his face. And," said Rod, "he never said a word. He just motioned me to the safe, pointed to the secret latch, aimed a gun at me, and motioned me to empty the safe. Then he left. As soon as I knew he was gone, I phoned you."

Suddenly, a young man entered the room. "I'm Brett Gerett, Rod's singing partner," he said nervously, brushing back his hair with a heavily freckled hand. "Rod, this is crazy! You know that I'm not the type to steal from you. And I know that you and our manager had a big fight just last week!"

"I heard that!" cried a curly-headed and quite furious man, as he burst through the door. "I'm Mr. Riddel, Mr. Bleeker's manager. If you can't figure this crime out, I don't know why. Those art pieces were insured. If you ask me, I think Rod might have robbed himself to collect the insurance!"

"What are you talking about?" Rod screamed. "You under-handed sneak! You know that the insurance policy ran out last month. Robbing me right now was the perfect time to really hurt me!"

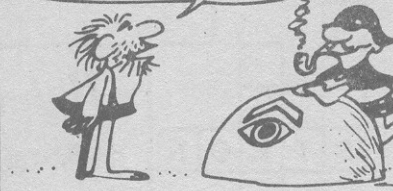
BC
MY FAVORITE DIAMOND IS MISSING!



WHERE DID YOU SEE IT LAST?



EBBETS FIELD.





Sherlock's
Deluxe Car Wash

Automatic-Turbo Brush
Wash - Wax - Dried

Tel. 529-5080

2070 SILAS DEANE HWY. CRAIG P. HOLMES
ROCKY HILL, CONN. 06067 MANAGER

"I agree," said Shirley Holmes. "Brett, why do you want to hurt Rod so badly?"

Why does Shirley suspect Brett?

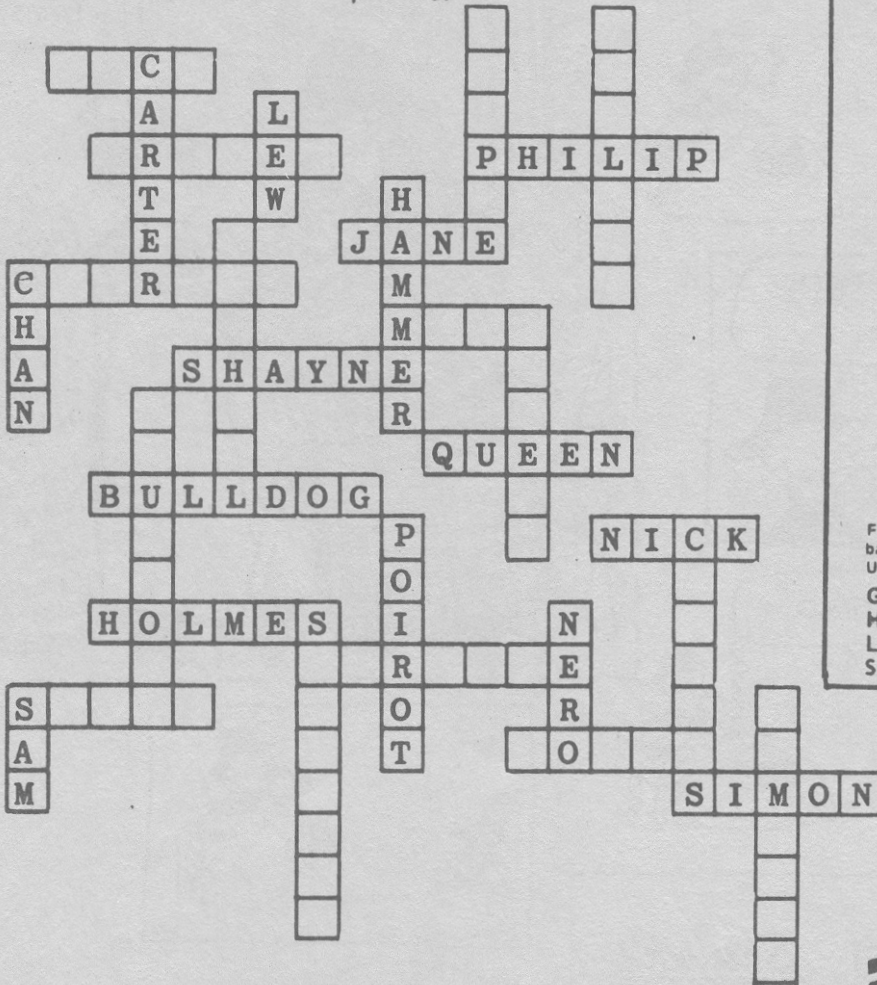
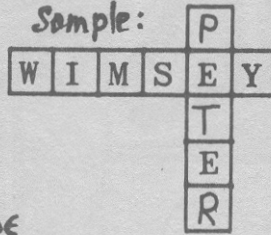
"A STRANGE CASE, WATSON"



DETECTIVE CONNECTIONS

Solve this puzzle by completing the name of each fictional detective in the diagram. As you see, either the first or last name of each one is already given and, as in the example below, the missing first or last name will always cross with the other part of the detective's name. * - EXCEPT ONE

Sample:



WORD SLEUTH • Famous Partners

GALLAGERONNEBEW
 IMFIERDSEHOLELS
 LONEGMEFOBESECM
 BLFACGOHOLERTCC
 ELIGVNTLGMUWEAF
 REEITIRILALOHIW
 DEFAMSLOLYLGELE
 OENSEBHLEEDLELD
 TNULEGEEUDDRAER
 ENERUALAASYDAGA
 WATSONLAUNDRAHH

Find the listed words in the diagram. Yesterday's unlisted clue: EDERLE backward, up, down and diagonally. Unlisted clue hint: SIR ARTHUR

- | | | | |
|-----------|----------|---------|--------|
| Gallagher | Shean | McGee | Molly |
| Holmes | Watson | Laurel | Hardy |
| Lunt | Fontanne | Weber | Fields |
| Smith | Dale | Gilbert | ? |

Holmes' Brother Remains Unbeaten

Sherlock is charming

*Watson is wry about Sandwich
 (Corned Beef, per chance?)*

Falcons Waive Moriarty

Holmes Appeared At Right Time

Holmes is alive

Watson's sudden delight

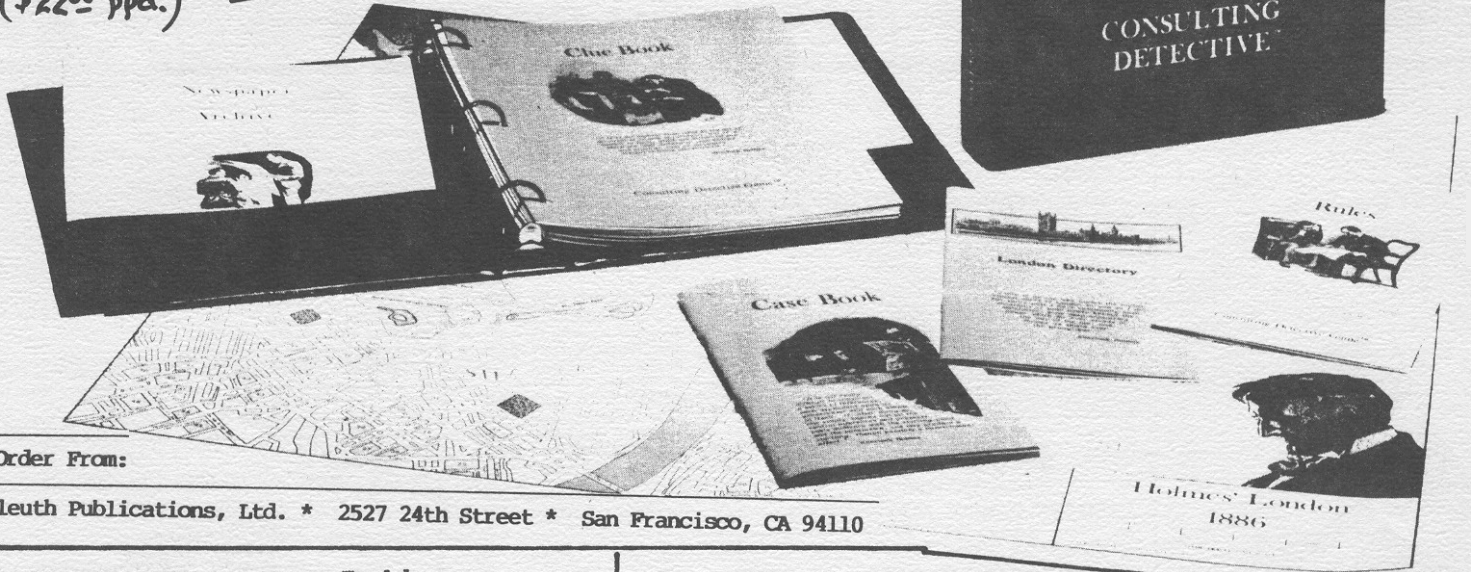
Slayings

The bodies of four young women were found in metropolitan Atlanta during the weekend, but police Sunday were not drawing any connections between them. Two of the bodies were found inside the city, one in Dunwoody and one in Gwinnett County.

Atlanta police Sunday were investigating the death of a woman whose body was found in an alley at 221 Baker Street N.W., the apparent victim of a stabbing.

Sherlock Holmes Consulting Detective Game

(\$2200 ppd.) NEW!



Order From:

Sleuth Publications, Ltd. * 2527 24th Street * San Francisco, CA 94110

Handmade Miniature Dolls

MARTHA-MY-DEAR
271 MT. AUBURN ST.
CAMBRIDGE, MA. 02138

- | | | |
|-----|-----------------|---------|
| S16 | SHERLOCK HOLMES | \$15.00 |
| S17 | DR. WATSON | \$15.00 |
| S18 | MRS. HUDSON | \$12.50 |
| S29 | BLACK PETER | \$15.00 |
| S30 | IRENE ADLER | \$15.00 |

ENGLISH MIXTURES

SOVEREIGN
54 New Dorp Plaza
Staten Island
New York 10306

221B

By seasoning Toasted Cavendish, Latakia and Perique with a Virginia Cavendish base, we have achieved an English mixture suitable for all day smoking. Latakia and Perique proportions are used only as condiments for a rounded depth of flavor.

1/2 lb.

221B \$ 6.00

SHERLOCK'S SHAG \$ 5.00

+++++

