

The Pleasant Places of Florida*

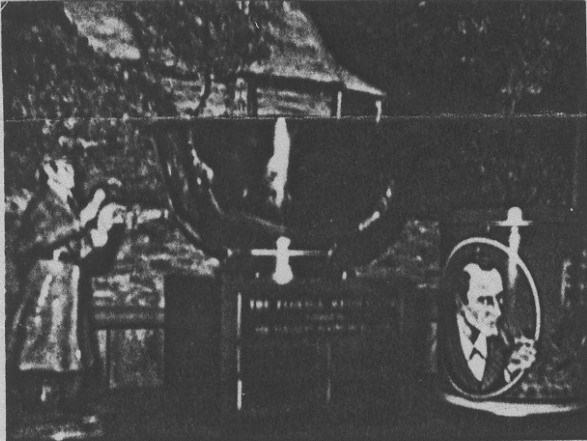
A Corresponding Scion of
The Baker Street Irregulars

[* - Suggested in FIVE.]

Communication No. 134

February - 1994

WESSEX CUP LAST CALL to sign up. Give David McCalister a call at [redacted] if you can make it. Don't miss this great event. All who attend will receive a Special Souvenir Programme which will include a Silver Blaze Trainer's Kit (John Straker got a real kick out of it!) (RACE DATE: SAT, FEBRUARY 12TH.)



P.P. of F's Permanent "Wessex Cup"

SCION of the TIMES: Up-to-date Statistics of the Pleasant Places of Florida:
66 Resident Members; 70 Non-Resident Members
16 Honorary Members; 13 Foreign Members; &
20 Scion Exchanges. Total Circulation: 165.

While Supplies last - I'll send you the new Brit. Sherlock Holmes stamps (set of 5) for only \$2.50 postpaid. I also have a few 1st Day Covers for just \$7.50.

71

**THINGS ARE
LOOKING UP**

Sherlock
& Watson

**SWEET CAPORAL
CIGARETTES**

Mutt & Jeff Series

Original Pictures
Illustrating
Popular Phrases
by
"Bud" Fisher
T. E. Powers
R. L. Goldberg
"Tad"
Gus Mager
Etc., Etc.
Series of Over 250 Designs
Factory No. 30 2nd Dist. of New York

Violence not Moriarty's fault. *SEZ WHO?*

Philatelic Philandering
... or Stamping around with
SHERLOCK HOLMES
Ted Friedman, Sherlockian philatelist from N.J., and a Non-Resident PPOfer, wrote a nifty article "Jujitsu & Sherlock Holmes", in Linn's Stamp News. I'll send you a copy on request. ... Below are 2 Stamp Show cancels of S'ian interest. One is St. Bart's, London, and the other is from Long Bch, CA.

WHERE WATSON MET HOLMES

**ST BARTHOLOMEW'S
HOSPITAL**

12 OCT 1993

LONDON EC1

24

SHERLOCK HOLMES & WATSON
"BROTHER"

**AUTUMN
STAMPEX**

12 OCT 1993

LONDON SW1

HONORING ARTHUR CONAN DOYLE
CREATOR OF SHERLOCK HOLMES

LONG BEACH, CA 90815

Sir Arthur Conan Doyle • 1859 - 1930

JANUARY 8, 1994

STAMP EXPO/STATION

STAMP EXPO Station, USPS,
Box 177, Long Beach, CA 90801-0177, Jan. 8-9. (Silhouette of Sherlock Holmes with deerstalker cap, meerschaum pipe, "Honoring Arthur Conan Doyle/Creator of Sherlock Holmes," "Sir Arthur Conan Doyle 1859-1930.")

THREESOMES

Locate all letters that appear exactly alike 3 times. Rearrange those letters to find a famous Holmesian. [Answer in next Communication.]

E	F	A	E	R	V	O	R	D	G	Z	C	W
T	Y	U	T	O	X	A	O	L	Y	S	B	U
X	C	O	S	D	R	K	I	K	C	E	Q	M
G	A	D	N	D	H	I	A	O	E	U	A	Y
M	D	H	Q	I	H	E	T	X	R	J	H	S
J	R	C	Y	O	F	Y	O	T	X	A	T	R
O	V	W	O	F	Z	Q	E	H	O	L	D	D
S	A	Q	M	D	A	O	X	B	S	R	C	Y
E	O	I	U	A	S	K	A	I	N	E	R	H
Y	O	E	X	K	T	F	E	G	Q	I	T	G